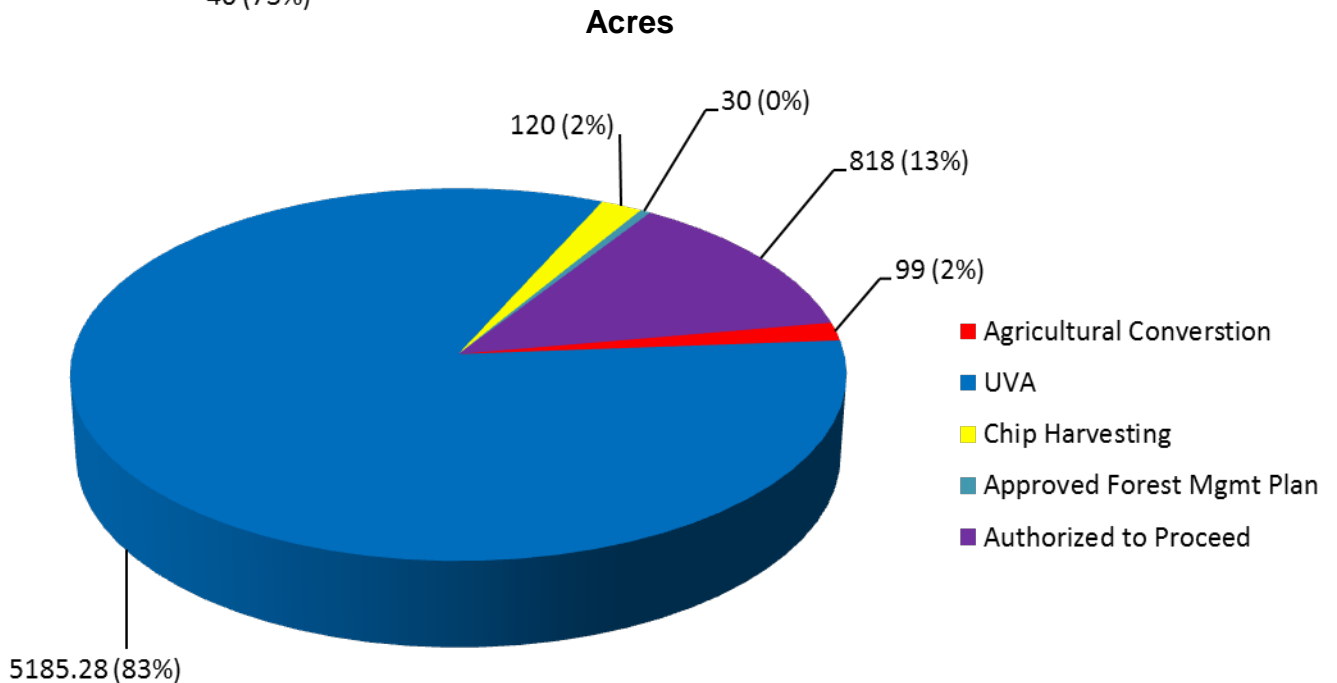
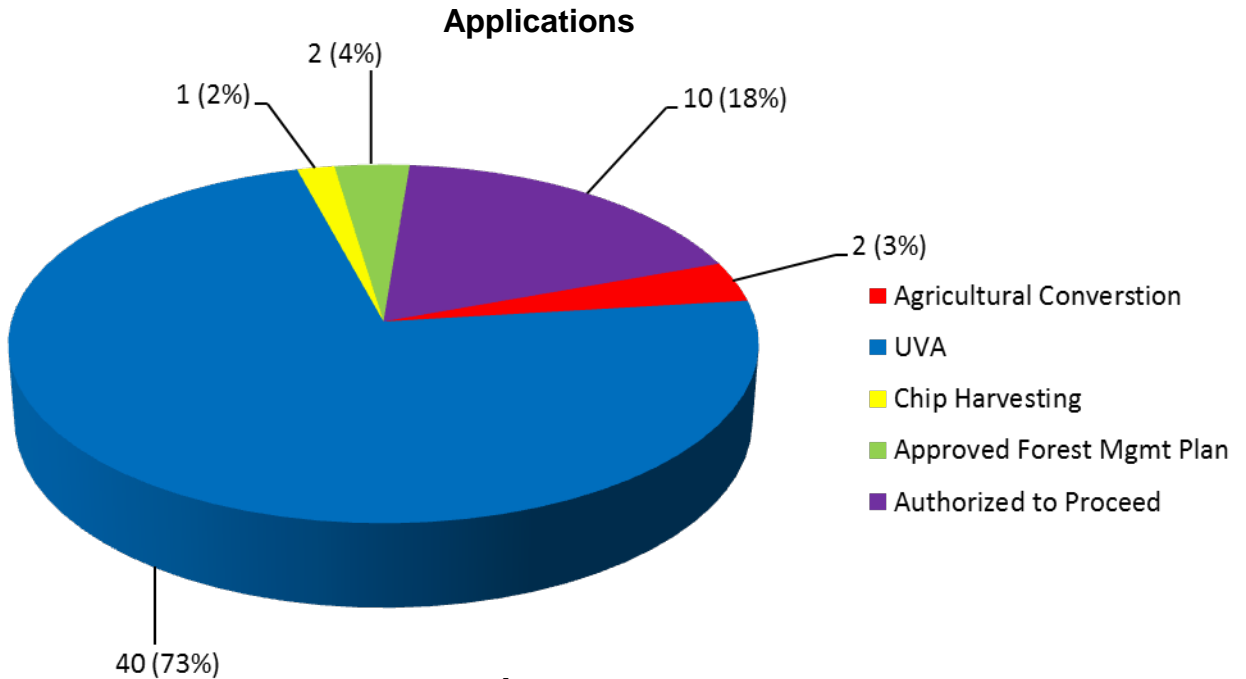


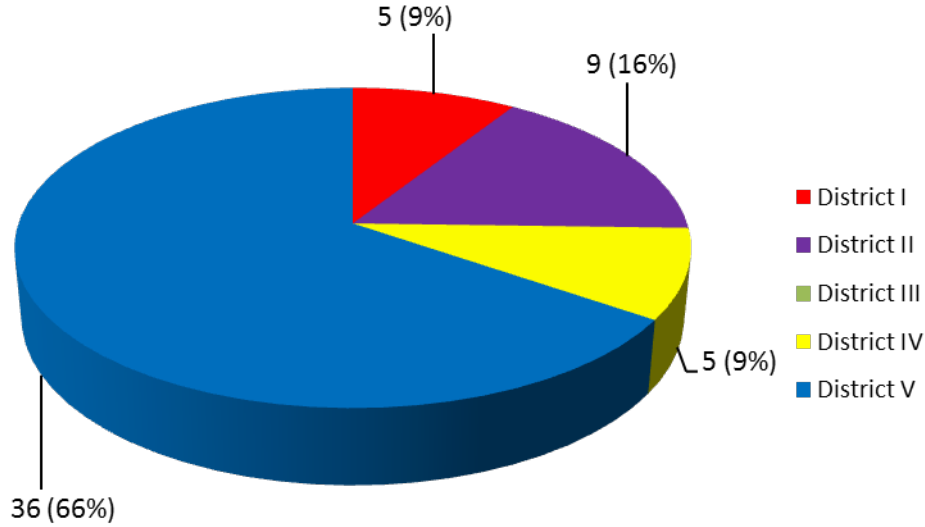
## 2013 Heavy Cut Statewide Summary

Notice of Intent to Cut Application	Number	Acres
Authorized to Proceed	10	818
Not Authorized to Proceed	0	0
Exemptions		
Informational	0	0
Agricultural Conversion	2	99
Act 250 (10 V.S.A. Chapter 151)	0	0
UVA	40	5,185.28
Chip Harvesting Plan (30 V.S.A. § 248)	1	120
Approved Forest Mgmt Plan in Effect	2	30
<i>Total Exemptions Issued</i>	45	5434.28
<b>GRAND TOTAL</b>	<b>55</b>	<b>6,252.28</b>
Number of heavy cut complaints and technical assists requiring a field visit	16	

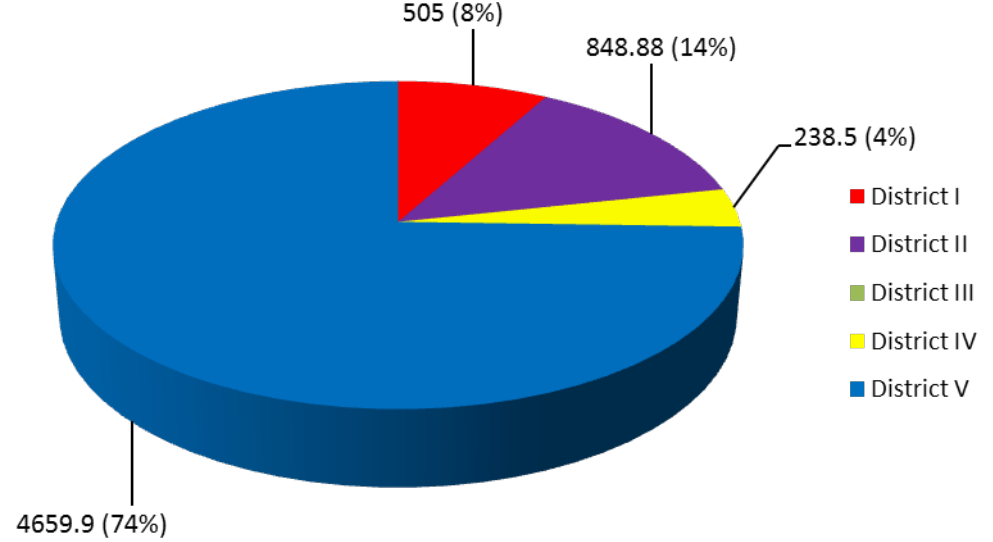


## Comparison by District

### Applications

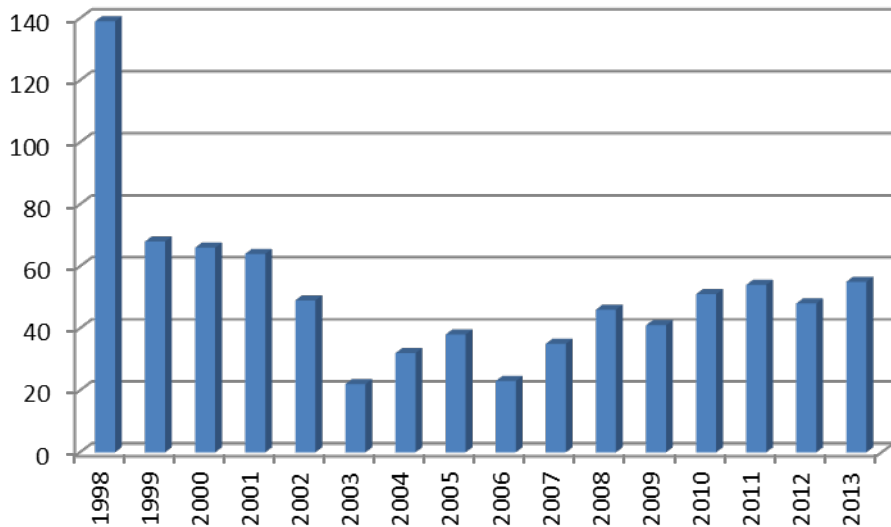


### Acres

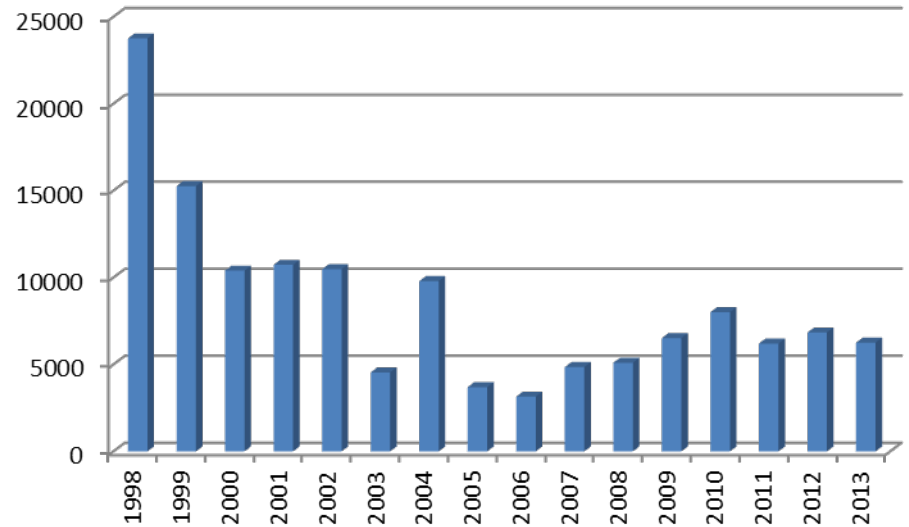


## Comparison by Year

### Applications



### Acres



Years 1998-2005 is fiscal year data; 2006 forward is calendar year data.

Years 1998-2005 is fiscal year data; 2006 forward is calendar year data.